



**New  
Member  
Show**

**Cambridge Art Association**

**Kathryn Schultz Gallery  
July 7 - July 25th, 2015**



# Participating Artists:

Lorraine Agri

Susan Kottler

On-Kyeong Seong

Pesya Altman

Erica Licea-Kane

Randy Shore

Julie Alailima

Maria Lobo

James Varnum

Bob Ballou

Melissa London

Brian Wilson

James Banks

Lelio Nicolas

Cynthia Brody

Christine Palamidessi

Don Cooper

Irina Parfenova

Maria Coppola

Hyeshin Park

Betty Glick

Chia Ling Pitluga

Debra Jayne

Moira Racich

Nayoung Jeong

Joseph Reardon

Alexandra Jordankova

Claudia Ruiz-Gustafson

Joanna Kao

Ellen Ryder-Griffin

Kelly Knight

Gordon Saperia

## Creativity takes courage - Henri Matisse

Each summer, the Cambridge Art Association celebrates our newest class of artists in our NEW MEMBERS SHOW. And each year, we are pleased to present the exceptional talents of regional artists who have the courage not just to create, but to present their work - and with it, a piece of their soul.

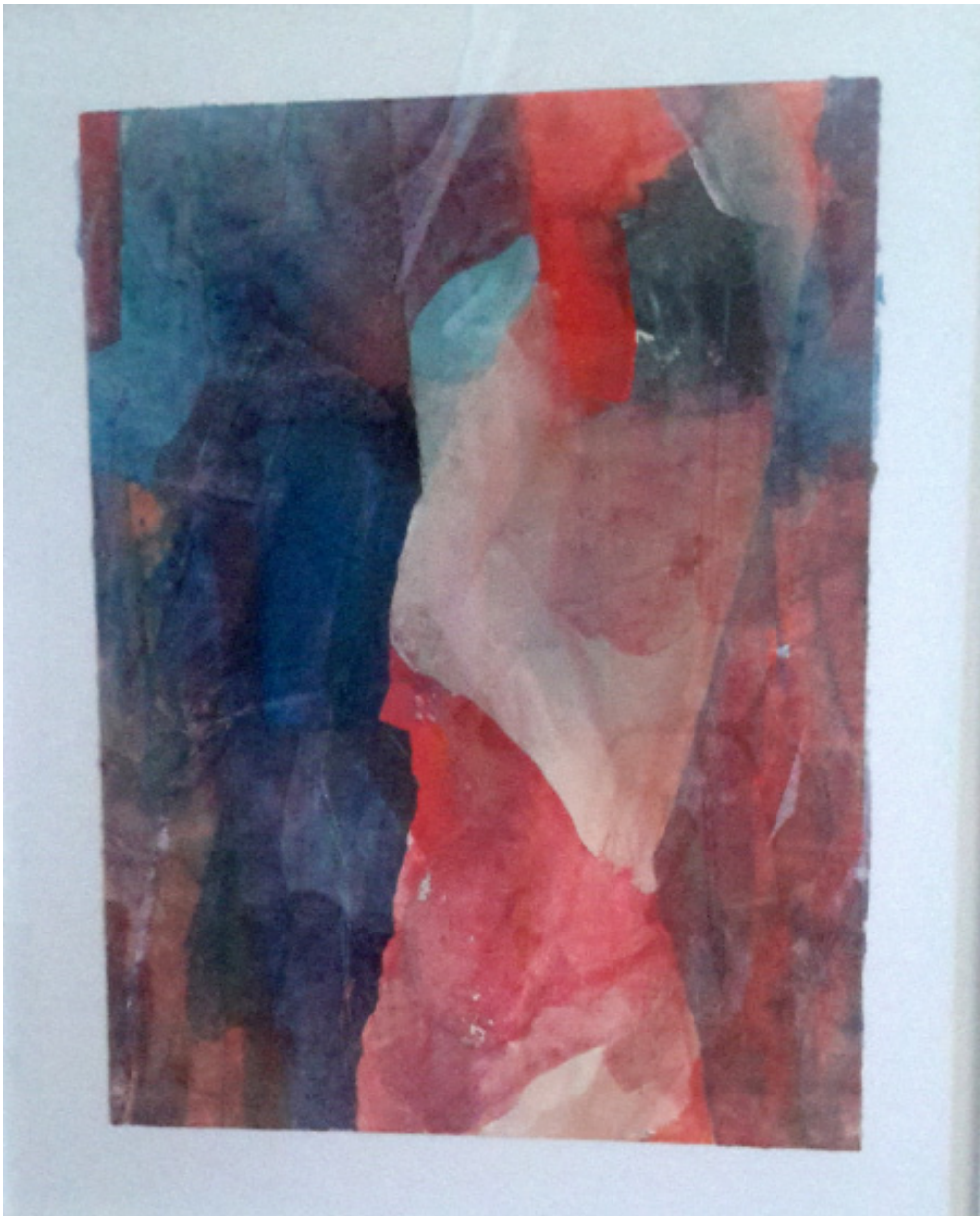
In 2015, creativity is a present topic, influencing everything from STEAM education discussions to how cities engage their populations. 2015 is the year when the MFA is more valuable than the MBA. Creativity is the buzz-word of this moment. Encouraging creativity is the backbone of the Cambridge Art Association, a tenet of the organization since our beginnings more than 70 years ago.

It is impossible to talk about creativity without discussing creating. The artists presented in our NEW MEMBERS SHOW exhibit not only a high degree of creativity, but also an unparalleled attention to their craft.

In this non-juried exhibit, we present individuals who continue to push the boundaries of the visual medium. Brian Wilson, a prize-winner in our Spring 2015 PHOTOGRAPHY NOW exhibit (juried by Stephen Turlentes) creates hybrid photo-sculptures that explore the ways we see – or do not see – the world around us. On-kyeong Seong weaves together painting and fiber art, building up layers in fantastical landscapes. Jim Banks, winner of the Sculpture/3D Prize in our 14th National Prize Show, finds the soul of discarded trunks and tree-limbs in his woodcarvings. These are but three examples in a class of over 50 new artists working in New England.

Thank you for supporting the Cambridge Art Association and our artists by visiting our galleries, and purchasing this publication.

Building vibrant communities through visual art, since 1944.



*Figure Within*

22x18  
Mixed media

# Lorraine Agri







*3 Weeks of Summer*

20x24  
Acrylic on canvas



# Pesya Altman



*Imaginary Topography*

24x14.5  
Oil on wood panel

**Julie Alailima**





*Wellfleet Afternoon*

16x20  
Mixed



**Bob Ballou**





*On Point*

27x 17 x 12  
Catalpa and Various  
stained wood

# James Banks





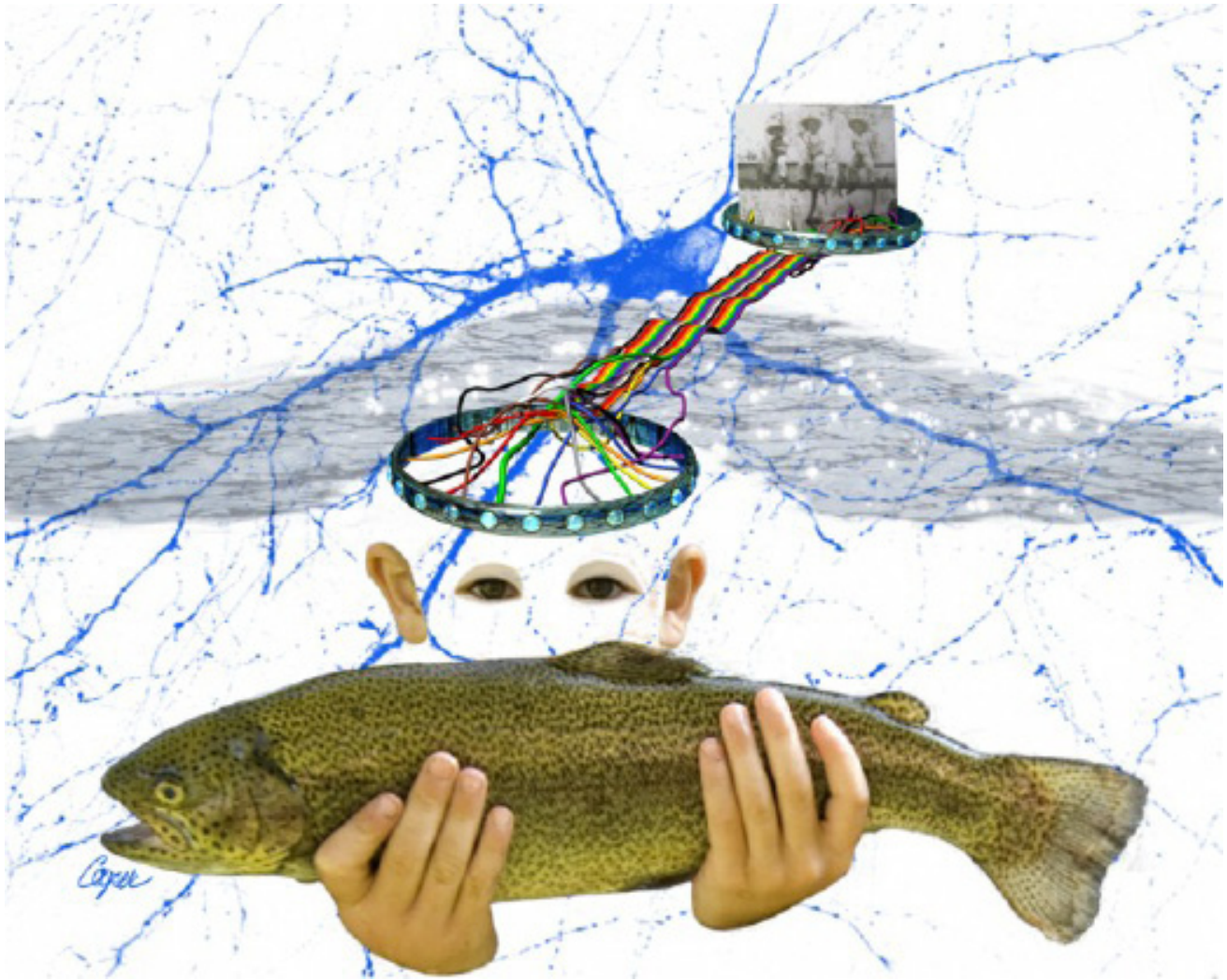


*Everyone Leaves A Mark*

19x22  
Mixed media on panel



# Cynthia Brody



Fishing Memory

11x14

Digital illustration

# Don Cooper







*Cracked Open*

12x12  
Oil on canvas



# Maria Coppola



*Green Landscape*

12x12  
Oil on canvas

**Betty Glick**







*International Connection*

20x20  
Acrylic on canvas



**Debra Jayne**



*Personal Space*

5x6.5x5

Earthenware clay, porcelain, metal wire,  
gold luster

# Nayoung Jeong





*Abstract Point Of View*

12x15  
Mixed media painting



# Alexandra Jordankova





*Aftermath*

35x25

Mixed media painting and collage

# Joanna Kao





*Uncle Josiah as a Boy*

39x20  
Fiber mixed media



**Kelly Knight**



*Late Afternoon*

16x21

Archival digital print

# Susan Kottler





*Through #1*

12x12x2

Fabric, couching, rice paper,  
acrylic pigment, acrylic medium



**Erica  
Licea-Kane**



*But Without Chaos the World is Boring*

9x9  
Embroidery

# Maria Lobo







*Park Street*

20x30  
Archival digital print



# Melissa London



*Last Night at the River*

16x20  
Acrylic on canvas

# Lelio Nicolas





*Yogini With Pune Belt*

13x16x5  
Plaster, wax, fabric



# Christine Palamidessi





*Luna*

21x17  
Charcoal and watercolor on paper

# Irina Parfenova







*Woman in a Purple Head Band*

16x20  
Oil on canvas



# Hyeshin Park

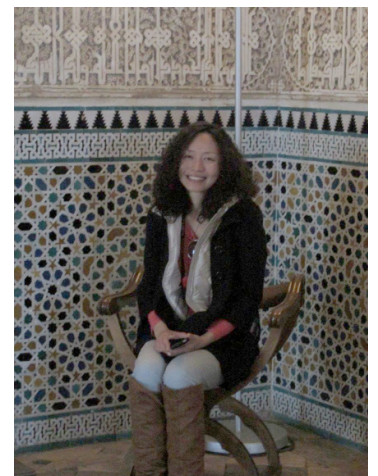


*Rain on Primrose*

24x18x3/4

Mixed medium; 35 mm slide  
imprints with latex paint, acrylic  
paint, UV protective varnish

# ChiaLing Pitluga







*Milky Way*

12x12  
Acrylic on canvas



# Moira Racich



*The Chandlery*

18x24  
Photograph

# Joseph Reardon





*Untitled from the "Lady of Lachay" Series*

16x20  
*Digital C-Print*



# Claudia Ruiz-Gustafson



*Autumn Bog*

16x20  
Photograph

# Ellen Ryder Griffin







*Blue Tunnel*

20x24

Digital ink photo



# Gordon Saperia

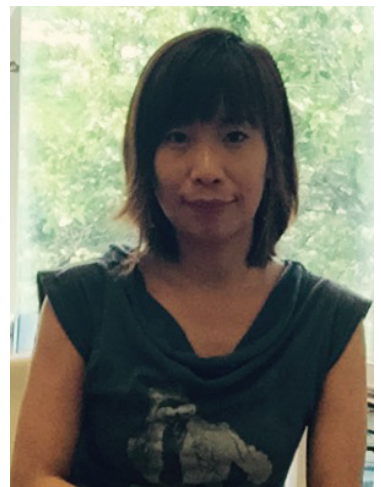


*In the Boom of the Tingling Strings*

22x28

Oil and stitching

# On-Kyeong Seong







Solitude

16x20  
Digital print



# Randy Shore

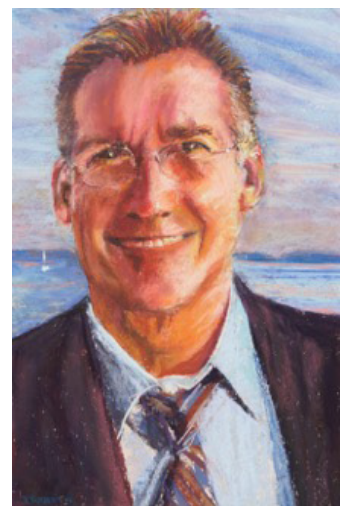


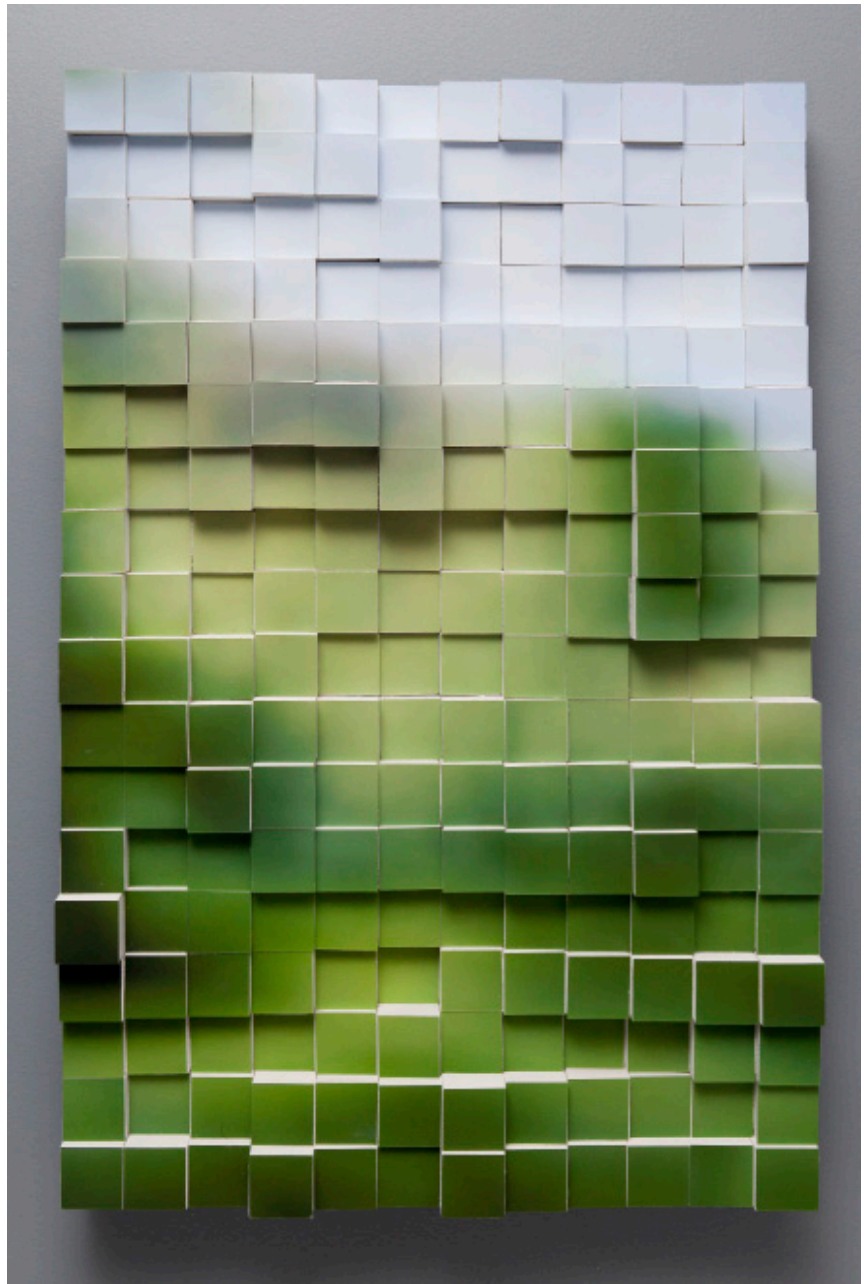


*Forbidden*

20x26  
Watercolor on yupo

# James Varnum





Arnold Arboretum One

18x24

Photographic sculpture : archival  
pigment print, wood, archival mat  
board



# Brian Wilson